

BIO-LOGICS BLOOD BAND COMPONENTS

(1) WRISTBAND SINGLE-POUCH (EMERGENCY) – ADULT/PEDIATRIC 1000/BX

Available in:

- Adult Pastel Blue (51611M)
- Adult Pink (51612M)
- Adult Pastel Green (51613M)
- Adult Orange (51614M)
- Adult White (51615M)
- Adult Yellow (51616M)

- Pediatric Pastel Blue (51641M)
- Pediatric Pink (51642M)
- Pediatric Pastel Green (51643M)
- Pediatric Orange (51644M)



(2) PRE-EMBOSSED ID BAND TAG – 500 CARDS/BX (1000 TAGS)

Available (without Signature Panel) in:

- Blue (51720D)
- Red (51721D)
- Green (51722D)
- Orange (51723D)
- Purple (51724D)
- White (51725D)



Available (with Signature Panel) in:

- Blue (51750D)
- Red (51751D)
- Green (51752D)
- Orange (51753D)



(3) PORTABLE LABEL PRINTER AND LABEL CASSETTES

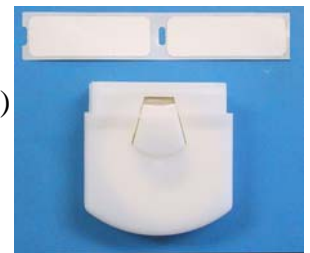
Printers available in:

- Black (51288BK)
- Blue (51288BU)
- Green (51288GR)
- Natural (51288NT)
- Red (51288RD)
- Yellow (51288YL)
- Wall mounted printers also available



Label Cassettes available in:

- Green 10/BX (51531X)
- Green 100/BX (51531C)
- Yellow 10/BX (51532X)
- Yellow 100/BX (51532C)
- Red 10/BX (51533X)
- Red 100/BX (51533C)
- White 10/BX (51534X)
- White 50/BX (51534L)
- White 100/BX (51534C)



PRODUCT DETAILS & ASSEMBLY

1. To assemble the blood band, first break apart the ID band tag. The embossed pieces (pre-embossed at the factory) each have a unique blood bank ID number, and will therefore be used for two different patients (one number for each patient). The remaining pieces (circled in yellow) can be thrown away.
2. Insert one of the embossed band tags into the single-pouch wristband (embossed side facing up), after attaching the tag to the band tether.
3. Attach wristband to patient's wrist.
4. Fully insert band tag (while connected to patient's wrist) into label printer to create self-imaging labels. These labels are printed on demand at bedside to identify any blood draws and/or specimens for this patient.
5. The unique number on the ID band tag will positively link any blood samples/units and necessary paperwork to the correct patient.
6. The blood band (pre-embossed unique number) can also double as disaster or downtime number in the Emergency Department (ED). The bands can be used in disaster kits in the ED for mass trauma or casualty situations.

