



### (3) ALERT LABELS

[Alert Labels](#) available in:

- Various sizes, colors, and alert verbiage



### (4) PORTABLE LABEL PRINTER AND LABEL CASSETTES

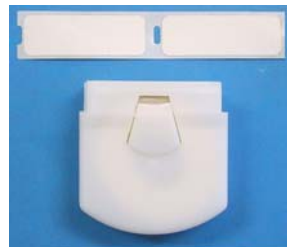
[Printers](#) available in:

- Black (51288BK)
- Blue (51288BU)
- Green (51288GR)
- Natural (51288NT)
- Red (51288RD)
- Yellow (51288YL)
- Wall mounted printers also available



[Label Cassettes](#) available in:

- Green 10/BX (51531X)
- Green 100/BX (51531C)
- Yellow 10/BX (51532X)
- Yellow 100/BX (51532C)
- Red 10/BX (51533X)
- Red 100/BX (51533C)
- White 10/BX (51534X)
- White 50/BX (51534L)
- White 100/BX (51534C)



**\*\*See next page for Product Details and Assembly\*\***

## PRODUCT DETAILS & ASSEMBLY

1. ID cards come blank from the factory and need to be embossed with patient info by the customer.
2. After embossing the plastic card, break it apart into three pieces. Use top portion at Nurse's station (with room jacket); the bottom portion is used as the band tag. The remaining piece (circled in yellow) can be thrown away.
3. Fully insert band tag (while connected to patient's wrist) into label printer to create self-imaging labels.
4. Labels are printed on demand at bedside to identify lab specimens for this patient.
5. With patient information and alerts all on one wristband, this system consolidates pertinent patient information and serves as a hospital-wide solution for patient identification.

