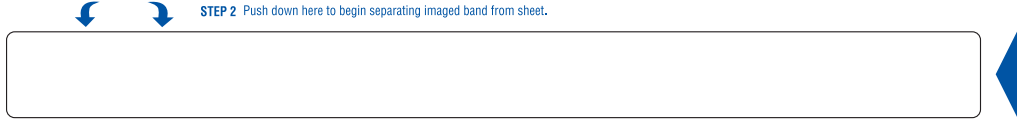


MOTHER

SELF LAMINATING WRIST BAND



STEP 1
Print ID band and labels on laser printer.

STEP 3
Turn sheet over and lift ID band from sheet – start from the right and pull to the left.



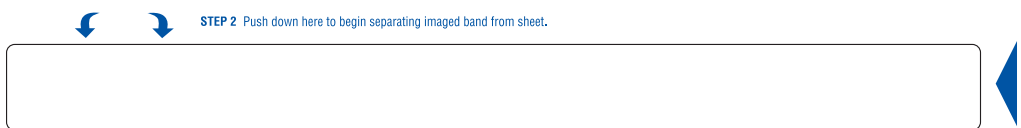
STEP 4
Fold film over imaged area to create ID band.



SELF LAMINATING WRIST BAND

FATHER

SELF LAMINATING WRIST BAND



STEP 1
Print ID band and labels on laser printer.

STEP 3
Turn sheet over and lift ID band from sheet – start from the right and pull to the left.



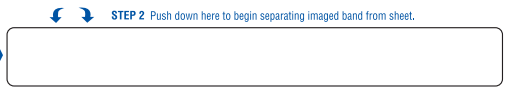
STEP 4
Fold film over imaged area to create ID band.



SELF LAMINATING WRIST BAND

BABY

SELF-LAMINATING WRIST BAND



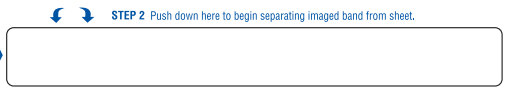
STEP 1
Print ID band on laser printer.

STEP 3
Turn sheet over and lift ID band from sheet – start from the right and pull to the left.

STEP 4
Fold film over imaged area to create ID band.

BABY

SELF-LAMINATING ANKLE BAND



STEP 1
Print ID band on laser printer.

STEP 3
Turn sheet over and lift ID band from sheet – start from the right and pull to the left.

STEP 4
Fold film over imaged area to create ID band.



SELF-LAMINATING IDENTIFICATION CARD

THE *SJ* Companies
Conf-ID-ent
 Patient Identification System
 Reorder: Call (800) 435-4242
 Cat. No. WBW42

MOTHER/FATHER/BABY
 SELF-LAMINATING IDENTIFICATION BANDS
 WITH IDENTIFICATION CARD

Licensed under Laser Band U.S. Patent #6,067,739; #6,000,160; #5,933,993 and others pending.

Back side is Tamper Evident

